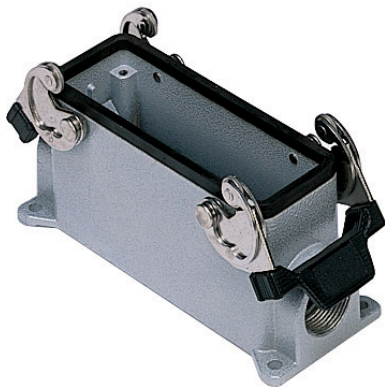


Part number

MHP 24.25

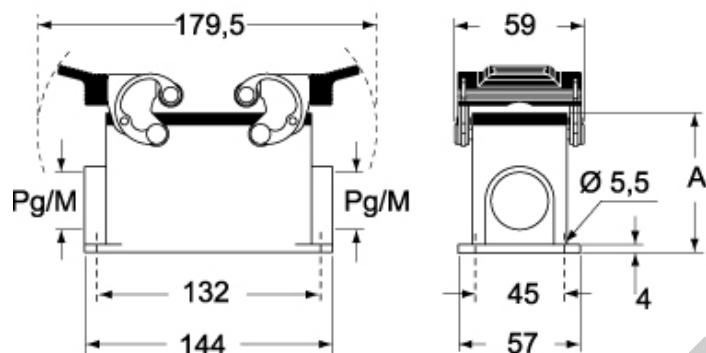
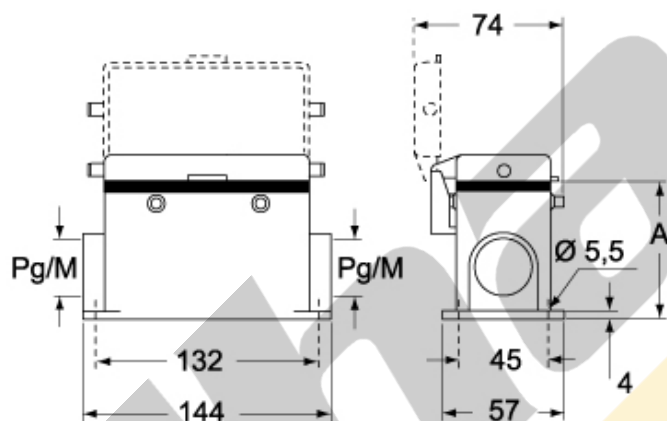
Surface mounting housing, C-TYPE series, with 2 levers, M25 cable entry, size "104.27"

Product description		Material properties	
Product type	Surface mounting housing	Other materials	Lever: Stainless steel, polyamide (PA)
Series	C-TYPE		Gasket: NBR
Closing type	With 2 levers	Colour	RAL 7040 grey
Size	Size 104.27	RoHs conformity	Compliant
Cable entry	With cable entry M25	China RoHs - EFUP	E
Technical data		REACH SVHC substances	No
IP degree of protection	IP65 / IP66 / IP69	Approvals / Standards	
Further technical details		Certifications	DNV, BV
Weight	387,00 g	UL	ECBT2
Operating temperature range (min, max)	-40°C...+125°C	cUL	ECBT8
		General ordering information	
		EAN13 code	8015747054881
		eCl@ss 8.1	27440202
		ETIM 7.0	EC000437
		Packaging Information	
		Packaging length	475,00 mm
		Packaging height	180,00 mm
		Packaging width	200,00 mm
		Packaging weight	4,42 kg
		Packaging volume	17,10 dm ³
		Packaging description	Carton box
		Packaging quantity	10 Pcs
		Packaging EAN code	8015747250986
		Sub-packaging weight	2,21 kg
		Sub-packaging description	Plastic packaging
		Sub-packaging quantity	5 Pcs
		Sub-packaging EAN barcode	8015747054904

Part number

MHP 24.25

Catalogue drawings

CHP CAP - MHP MAP**CHP CS/CP CAP CS/CP - MHP CS/CP MAP CS/CP**

	A
CHP / MHP	63
CAP / MAP	80
CHP CS / MHP CS	63
CAP CS / MAP CS	80
CHP CP / MHP CP	63
CAP CP / MAP CP	80

Notes

Dimensions shown in mm are not binding and may be changed without notice.