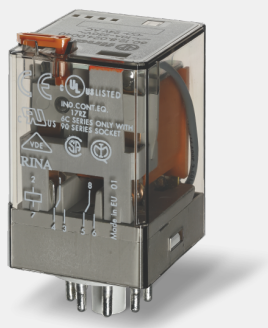


601290120040

General purpose relay 6 - 10 A

Downloaded from chalongroup.co.uk



This image is for illustrative purposes only and therefore may not represent the exact product code. Colours may vary.

Technical description:

Industrial relay, 8 and 11 pin plug-in socket version, 2 pole, CO (nPDT), 10 A, AgNi, DC coil, 12 V, operating from 9.6 to 13.2 V, rated power 1.3 W, resistance 110 Ω, consumption 109 mA, holding voltage 6 V, must drop-out voltage 1.2 V, option: Lockable test button + mechanical indicator, ambient temperature from -40 to +70 °C

[BROWSE PRODUCT PAGE](#)

Technical Features:

Ambient temperature range:	-40...70 °C
Commercial Description:	General purpose industrial relay, 2 pole 10 A contacts, 8 pin plug-in. Available version with bifurcated contacts for low level switching: type 60.12-52xx, 2 pole, 6A, 8 pin plug-in.
Contact configuration:	2 pole, CO (nPDT)
Dimensions:	32.5x54.2x36.4 mm
Electrical life:	200000 cycles
Insulation coil/contacts:	4 kV
Nominal voltage DC:	12 V
Operating range DC:	9.6...13.2 V
Rated contact voltage:	250 V AC
Rated current (contacts):	10 A
Rated power DC:	1.3 W
Supply:	DC coil

Certifications and quality approvals (according to type):



The information, technical details, drawings and features contained in this document are subject to change or modification at any time.
It is for information purposes only and does not form the basis of a contract.

Need more information?
[Contact our sales](#) [Find a dealer](#)