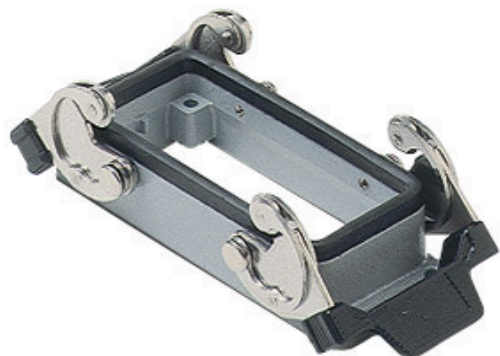


Part number

**CHI 16**

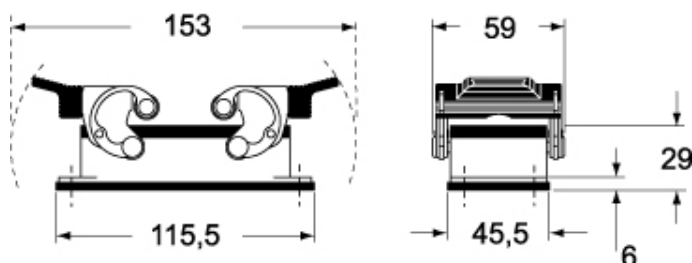
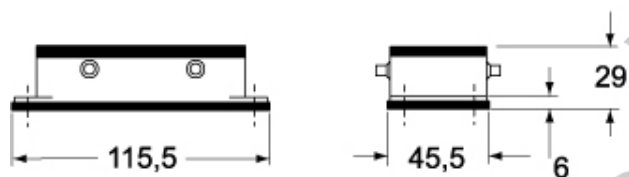
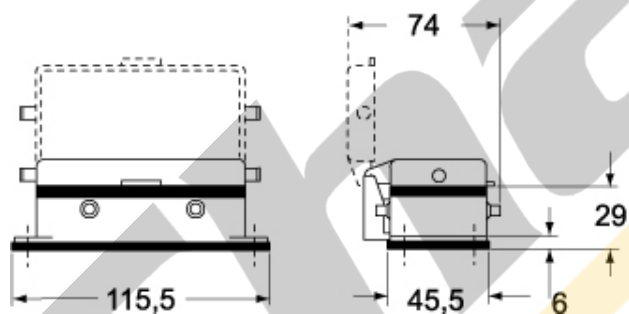
Bulkhead mounting housing, C-TYPE series,  
with 2 levers, size "77.27"

Product description		Material properties	
Product type	Bulkhead mounting housing	Other materials	Lever: Stainless steel, polyamide (PA) Gasket: NBR
Series	C-TYPE	Colour	RAL 7040 grey
Closing type	With 2 levers	RoHs conformity	Compliant
Size	Size 77.27	China RoHs - EFUP	E
Cable entry	Without cable entry	REACH SVHC substances	No
Technical data		Approvals / Standards	
IP degree of protection	IP65 / IP66 / IP69	Certifications	DNV, BV
Further technical details		UL	ECBT2
Weight	160,70 g	cUL	ECBT8
Operating temperature range (min, max)	-40°C...+125°C	General ordering information	
		EAN13 code	8015747017688
		eCl@ss 8.1	27440202
		ETIM 7.0	EC000437
Packaging Information			
		Packaging length	380,00 mm
		Packaging height	230,00 mm
		Packaging width	340,00 mm
		Packaging weight	7,14 kg
		Packaging volume	29,72 dm³
		Packaging description	Carton box
		Packaging quantity	40 Pcs
		Packaging EAN code	8015747017695
		Sub-packaging weight	0,89 kg
		Sub-packaging description	Plastic packaging
		Sub-packaging quantity	5 Pcs
		Sub-packaging EAN barcode	8015747017701

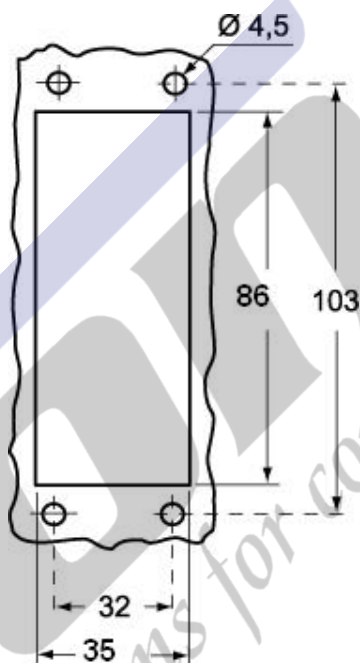
Part number

**CHI 16**

Catalogue drawings

**CHI****CHI C****CHI CS/CP**

Catalogue drawings



## Notes

Dimensions shown in mm are not binding and may be changed without notice.